

**9. Amerika-Pazifik Meisterschaften  
3. Viessmann Rennrodel-Weltcup  
2. BMW Sprint-Weltcup  
Whistler, BC Canada  
10. - 14. Dezember 2019**

**9<sup>th</sup> America Pacific Luge Championships  
3<sup>rd</sup> Viessmann Luge World Cup  
2<sup>nd</sup> BMW Sprint World Cup  
Whistler, BC Canada  
December 10-14, 2019**

Veranstalter/ Sanctioning body:	Internationaler Rennrodelverband (FIL) International Luge Federation (FIL)	
Ausrichter/ Organizer:	Luge Canada 250, 149 Canada Olympic Road SW Calgary, Alberta T3B 6B7 Canada	
Durchführung/ Local Organizer:	Luge Canada and Whistler Sliding Centre	
Repräsentant der FIL/ FIL Representative:	Claire DelNegro	USA
Sportdirektorin der FIL/ FIL Sport Director:	Maria Luise Rainer	FIL
Präsident der Jury/ President of Jury:	Atis Strenga	LAT
Mitglieder der Jury/ Jury members:	Grace Noda Marlene Vierboom	USA CAN
Technischer Delegierter der FIL/ Technical Delegate of the FIL:	Christian Eigentler	FIL
Zweiter Technischer Delegierter/ Second Technical Delegate:	Harry Salmon Michael Sonntag	CAN CAN
OK-Präsident/ President of OC:	Daniela Bruch	

Gesamtleiter/ Event Manager:	Cindy Nield	
Rennleiter/ Race Director:	Jim Watts	CAN
Bahnleiter/ Chief of Track:	Robb Zirnhelt	
Pressechef/ Chief of Press:	Chris Dornan	
Rennarzt/ Race doctor:	Während des offiziellen Wettkampfs muss ein Rennarzt zur Verfügung stehen. A race physician will be on duty during competitions.	
Medizinischer Dienst/ Medical service:	Während des gesamten Trainings und der Wettkämpfe sind Sanitäter an der Bahn. Emergency Medical Staff are on duty during all training sessions and competitions.	
Nennungen/ Registration:	Online über die FIL-Website <a href="http://www.fil-luge.org">www.fil-luge.org</a> (Startseite: „Mitglieder-Sektion/Login Anmeldung zu den Wettbewerben“) oder direkt unter <a href="http://www.mall-nauders.at/fil_registration/">http://www.mall-nauders.at/fil_registration/</a>  <i>Online through the FIL website <a href="http://www.fil-luge.org">www.fil-luge.org</a> (welcome page: „members section /login: registration for competitions“) or directly under <a href="http://www.mall-nauders.at/fil_registration/">http://www.mall-nauders.at/fil_registration/</a></i>	
Meldeschluss/ Closing date:	Entsprechend der im Online Registrierungssystem genannten Fristen <i>According to the time limits given in the online registration tool</i>	
Nenngeld/ Entry fees:	€ 20,- pro Einsitzer € 30,- pro Doppelsitzer Erfolgt keine Meldung über das Online Registrierungssystem, wird ein erhöhtes Nenngeld in Höhe von € 50,- (einheitlich pro Einsitzer bzw. Doppelsitzer) erhoben. Für jeden gemeldeten Athleten wird Nenngeld entrichtet.  <i>€ 20,- per single € 30,- per doubles In case of missing online registration an increased entry fee will be charged (same amount of 50.- € per single or doubles team). Registration fee has to be paid for every registered athlete.</i>	

**Versicherungsschutz/**

**Insurance:** Eine gültige Unfallversicherung ist für jeden Teilnehmer Pflicht. Mit der Nennung bestätigt der Nationalverband den Abschluss dieser Versicherung. Veranstalter und Ausrichter übernehmen keine Haftung.

It is the responsibility of each federation to ensure that all of its athletes have valid medical insurance. The organizer cannot be held liable for any accident or damage that may occur during the event.

**Reglement/**

**Regulations:** IRO, Ausgabe 2018  
*IRO, edition 2018*

**Rennstrecke/**

**Race track:** Künstlich vereiste Bob und Rodelbahn in Whistler, Whistler Sliding Centre  
Artificial Refrigerated Track Whistler, Whistler Sliding Centre

**Starthöhen/**

<b>Start heights:</b>	Herren Einsitzer / Men's singles:	Herrenstart / Men's start
	Damen Einsitzer / Women's singles:	Damenstart / Women's start
	Doppelsitzer / Doubles:	Doppelsitzer-Start / Doubles start

**Preise/**

**Prizes:** Medaillen für 1 - 3  
Medals for rank 1 – 3

Geschenke für Rang 1 – 6  
Gifts for rank 1 - 6

**Contact Information:**

Anschriften mit Telefonnummern (Mail, Mobil) /  
*Addresses with phone numbers (e-mail, mobile):*

- |  |               |  |              |
|--|---------------|--|--------------|
| - Gesamtleiter/<br>Event Manager             | Cindy Nield   | <a href="mailto:events@luge.ca">events@luge.ca</a>   | 403-202-6860 |
| - Organisationsbüro /<br>Organization office | Tim Farstad   | <a href="mailto:tfarstad@luge.ca">tfarstad@luge.ca</a>                                       | 403-202-6581 |
| - Bahnchef/<br>Chief of Track                | Robb Zirnhelt | <a href="mailto:rzirnhelt@whistlersportlegacies.com">rzirnhelt@whistlersportlegacies.com</a> | 604-967-1827 |
| - Pressechef/<br>Chief of Press              | Chris Dornan  | <a href="mailto:hpprchrish@shaw.ca">hpprchrish@shaw.ca</a>                                   | 403-620-8731 |

- Quartier-Reservierung/  
Organization of accommodation:

The [Tourism Whistler](#) Group Sales team are on stand-by to assist you in securing team accommodation and transfers at the very best rates. For a personalized and comprehensive proposal, call the team today on 1.604.966.3215 or send an email to [groups@whistler.com](mailto:groups@whistler.com).

**Fairmont Chateau Whistler - Friends and Family Rate**

Click the link above to make your reservation or call the In House Reservations Department at 1-800-606-8244 to make your reservation - quote Luge Canada Friends & Family group code (1219LUGE\_002) in order to receive the group rates.

**The Whistler Athletes' Lodge** – please see the attached sheet for more information and rates.

**Car Rental Information:**

- [Enterprise Rent A Car](#) or [National](#) | Booking Code – 5CALUGE

**Besonderheiten/Special features:**

- Veranstaltungen für Athleten, Teilnehmer/  
Arrangements for athletes and participants:

After Race Celebration – Saturday, December 14

Location – Buffalo Bills Bar & Grill - 4122 Village Green, Whistler, B.C

- Hinweise auf Zeremonien/  
Remarks regarding ceremonies:

Award ceremonies will take place at the end of each race day at the Finish Dock. All teams are expected to attend.

**Vorläufiger Zeitplan / Temporary Event Schedule:**

*\*Subject to change*

<b>Date:</b>		<b>Time:</b>	<b>Location:</b>
Thursday, December 5, 2019	<ul style="list-style-type: none"> <li>• Waiver Sign</li> <li>• Track Walk</li> </ul>	<ul style="list-style-type: none"> <li>• 09:00 – 11:00</li> <li>• 09:00 – 11:00</li> </ul>	<ul style="list-style-type: none"> <li>• Guest Services</li> </ul>
Friday, December 6 – Sunday, December 8, 2019	<ul style="list-style-type: none"> <li>• ITW - Training</li> </ul>	<ul style="list-style-type: none"> <li>• 09:00 – 19:00</li> </ul>	
Tuesday, December 10, 2019	<ul style="list-style-type: none"> <li>• Training</li> <li>• 1st Team Captain's Meeting/ Mannschaftsführersitzung</li> </ul>	<ul style="list-style-type: none"> <li>• 09:00</li> <li>• 19:00</li> </ul>	<ul style="list-style-type: none"> <li>• Maury Young Arts Centre (Gallery) - 4335 Blackcomb Way</li> </ul>
Wednesday, December 11, 2019	<ul style="list-style-type: none"> <li>• Training</li> <li>• 2nd Team Captain's Meeting and draw/ Mannschaftsführersitzung u. Auslosung</li> </ul>	<ul style="list-style-type: none"> <li>• 09:00</li> <li>• 19:30</li> </ul>	<ul style="list-style-type: none"> <li>• Guest Services</li> </ul>
Thursday, December 12, 2019	<ul style="list-style-type: none"> <li>• Nation's Cup</li> <li>• Awards</li> <li>• Training – Seeded Group</li> </ul>	<ul style="list-style-type: none"> <li>• 09:30</li> <li>• 14:30</li> </ul>	<ul style="list-style-type: none"> <li>• Finish Dock</li> </ul>
Friday, December 13, 2019	<ul style="list-style-type: none"> <li>• WC – Women (Run 1)</li> <li>• WC – Women (Run 2)</li> <li>• WC – Men (Run 1)</li> <li>• WC – Men (Run 2)</li> <li>• Awards</li> </ul>	<ul style="list-style-type: none"> <li>• 13:40</li> <li>• 15:05</li> <li>• 16:30</li> <li>• 18:05</li> </ul>	<ul style="list-style-type: none"> <li>• Finish Dock</li> </ul>
Saturday, December 14, 2019	<ul style="list-style-type: none"> <li>• WC – Doubles (Run 1)</li> <li>• WC – Doubles (Run 2)</li> <li>• Sprint – Men</li> <li>• Sprint – Women</li> <li>• Sprint - Doubles</li> <li>• Awards</li> </ul>	<ul style="list-style-type: none"> <li>• 12:50</li> <li>• 14:10</li> <li>• 15:30</li> <li>• 16:15</li> <li>• 16:55</li> </ul>	<ul style="list-style-type: none"> <li>• Finish Dock</li> </ul>



## FIL Event Package Winter 2019

### Accommodation

The Whistler Athletes' Lodge was constructed to provide accommodation for teams visiting Whistler for training camps and competition events in both winter and summer. As an athlete/coach, a member of a sport organization you too can enjoy this 2010 Olympic Winter Games legacy!

The Whistler Athletes' Lodge is located in Cheakamus Crossing, The Lodge features 75 rooms containing 150 beds and a commercial kitchen and dining area for groups to enjoy home cooked meals.

- Complimentary wireless internet
- Fully accessible bathrooms are located on each floor, and are shared between two rooms.
- Complimentary laundry facilities and a common room perfect for relaxing or watching TV.
- Complimentary parking

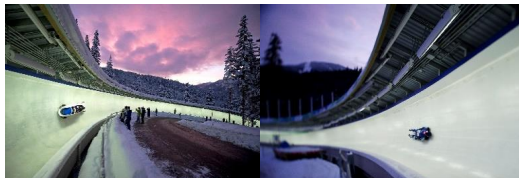
### Package Includes:

- Accommodation in the Athletes Lodge
- 3 meals per day prepared by nutritionist and red seal chef.
- High Performance Gym access for athletes and coaches

**Single Occupancy \$152.00 + tax**

**Double Occupancy \$222.00 + tax**

- Free parking 100 m from the front door
- Secured storage available in the Lodge basement
- 15 km to Whistler Olympic Park / 9 km to the Whistler Sliding Centre
- 4 km to Whistler Creekside / 8 km to Whistler Village



### Whistler Sliding Centre

**Address:** 4910 Glacier Lane, Whistler, BC, Canada V0N 1B4  
**Guest/Sport Services:** 604-964-0056/ klang@whistlersportlegacies.com  
**Web:** www.whistlersportlegacies.com



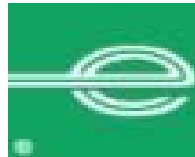
## Program Summary

Enterprise Rent-A-Car has been a leader in the car rental industry for more than 60 years. We have established a solid reputation as the car rental companies of choice, with a strong commitment to deliver quality service to our customers.

**Account Name: Luge Canada World Cup**

**Contract ID: 5CALUGE**

**Click on the Logo to make your Enterprise reservation**



### Travel Policy

- Contract ID number as listed above must be used at the time of reservation and rental for rates, insurances, and other provisions to apply.
- Standard driver and credit rental qualifications apply. Minimum rental age at most locations is 21 for commercial travellers renting vehicles for business purposes.

CONFIDENTIAL. All information contained herein is the property of Enterprise Rent-A-Car. Any unauthorized use and/or disclosure is prohibited.

